




INSTRUCTIONS



PAG Ltd. UK 565 Kingston Road, London SW20 8SA
 T +44 (0)20 8543 3131 E sales@paguk.com
 www.paguk.com

PAG America 18 Center Street, Ramsey, NJ 07446 USA
 T +1 631 300 8215 E sales@pagamerica.com

U5134

1. Overview

- The PAGlink battery system allows power to be drawn from the battery linking contacts. The power can be accessed by attaching the low-profile and lightweight PAGlink PowerHub which provides the necessary outputs.
- There is a PAGlink PowerHub available for both the V-Mount and Gold Mount PAGlink battery systems.
- PAGlink batteries provide up to 12A, when linked, which is suitable for the most power-hungry camera and multiple accessories.
- The PAGlink PowerHub is supplied with 4 D-Tap outputs for 12V camera accessories, such as an on-board light, a monitor, a transmission device and audio equipment.
- The PowerHub should be positioned between two PAGlink batteries. This enables you to hot-swap batteries for continuous power without unplugging your accessories. This is not possible when you power your accessories from the integral D-Taps of other manufacturer's batteries.
- The 4 D-Tap output units are interchangeable with Hirose (4-pin), Lemo (2-pin), 2.1mm (PP90) and USB (Gold Mount version) plug-in output units, available to purchase individually.
- The interchangeable plug-in units allow you to reposition the outputs to the left or right side of the camera (V-Mount version only), and to swap output types, thereby customising the PowerHub to your individual requirement. The plug-in output units are easily removed by using the red release buttons.
- A USB output is incorporated that allows you to power 5V camera accessories, charge your smartphone or power your Sat Nav.

2. Specification

2.1 Models covered by these instructions:

Model 9709 PAGlink PowerHub V-Mount
 Model 9712 PAGlink PowerHub Gold Mount

2.2 Suitable Batteries:

The PowerHub is designed for use with PAGlink batteries only. It cannot be connected directly to the camera or used with non-PAGlink batteries.

PowerHub V-Mount (9709) can be used with:

PAGlink PL96e	Model 9303
PAGlink PL96T	Model 9304
PAGlink PL150e	Model 9308
PAGlink PL150T	Model 9309

PowerHub Gold Mount (9712) can be used with:

PAGlink HC-PL94T	Model 9306
PAGlink HC-PL150T	Model 9313

2.3 D-Tap Outputs:

The PowerHub is supplied with 4 x D-Tap output units suitable for 12V camera accessories. The output is unregulated. The units are interchangeable with other types including Hirose (4-pin), Lemo (2-pin), 2.1mm (PP90), and USB (Gold Mount version only), available separately.

2.4 USB Output:

The USB output is regulated at 5V (1 Amp). The Gold Mount PowerHub USB output unit is interchangeable with other output units and can be situated in any of the 5 available output ports.

2.5 Dimensions (L x W x H):

V-Mount Model:

112 x 83 x 18mm
 4.4" x 3.2" x 0.7"

Gold Mount Model:

114 x 89 x 25mm
 4.5" x 3.5" x 1.0"

2.6 Weight:

V-Mount Model:
 100g (3.5oz).

Gold Mount Model:

140g (5oz).

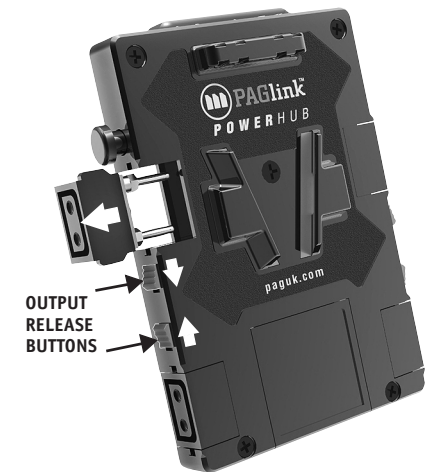
3. Operating Instructions



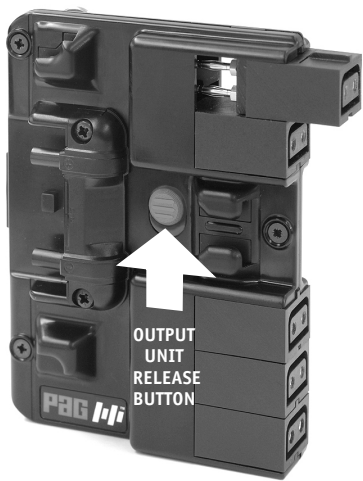
- 3.1** To connect the V-Mount PowerHub to the battery, align the PowerHub with the face of the battery and slide the Hub downwards until it engages with a 'click'. To remove the PowerHub from the battery, press the release button on the left side of the PowerHub and slide the unit up until it is free.



- 3.2** To connect the Gold Mount PowerHub to the battery, align the studs on the rear of the PowerHub with the locators on the front of the battery, and slide the PowerHub towards the right, until it engages with a 'click'. The white locking indicator on the PowerHub release button will be visible, indicating that it is locked-in position. To remove the PowerHub, press the release button situated on the left side of the PowerHub and slide the PowerHub to the left until it is free.



- 3.3** To remove an output unit from the V-Mount PowerHub, slide the corresponding red button away from the unit and pull the unit out. To locate an output unit simply align the sprues with the slots in the output port and push the unit in until it locks with a click.



OUTPUT
UNIT
RELEASE
BUTTON

- 3.4 To remove an output unit from the Gold Mount PowerHub, push-up the central red release button on the front face, and pull out the unit. To insert an output unit, align its sprue and slot with those on the PowerHub port, and push the unit in until it locks with a 'click'.



↑
USB OUTPUT
ON/OFF SWITCH

- 3.5 The USB output unit for the V-Mount PowerHub is situated at the base of the Hub. It can be used to power your smartphone or any 5V device. It features an ON/OFF switch with a blue LED power-on indicator.



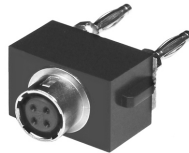
USB OUTPUT

- 3.6 The USB output unit for the Gold Mount PowerHub is situated in one of the 5 output ports on the right side of the Hub. It can be located in any one of the output ports.

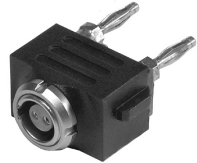
3.7 PowerHub V-Mount Output Units:



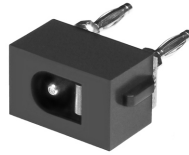
D-Tap
Model 9709D



Hirose (4-pin)
Model 9709H



Lemo (2-pin)
Model 9709L



2.1mm (PP90)
Model 9709P

3.8 PowerHub Gold Mount Output Units:



D-Tap
Model 9712D



Hirose (4-pin)
Model 9712H



Lemo (2-pin)
Model 9712L



2.1mm (PP90)
Model 9712P



USB
Model 9712U



- 3.9 The PowerHub can be positioned between two PAGlink batteries, enabling you to hot-swap batteries for continuous power without unplugging your accessories. Alternatively it can be used connected to the face of the rear battery.

NOTE: THE POWERHUB CANNOT BE CONNECTED DIRECTLY TO THE CAMERA V-MOUNT OR GOLD MOUNT PLATE OR TO NON-PAGLINK BATTERIES.

4. Servicing & Repair

- 4.1 The PAGlink PowerHub does not require periodic maintenance, consequently there are no user-serviceable parts inside.
- 4.2 If the PowerHub becomes damaged or a fault develops, seek advice from your nearest PAG Authorised Service Centre:

PAG America:
T: 631 300 8215
E: sales@pagamerica.com

PAG UK:
T: 020 8543 3131
E: support@paguk.com

If you are located outside the US and the UK please visit www.paguk.com/agents to discover your nearest point of contact.

- 4.3 **PAG TECHNICAL INFORMATION:**
For further technical information, please contact your nearest PAG Authorised Service Centre.

5. Guarantee

- 5.1 Notwithstanding any provision of any agreement the following guarantee is exclusive: PAG Limited guarantees each PowerHub it manufactures to be free of defects in material and workmanship under use and service for **18 MONTHS** from the date of purchase. This guarantee extends only to the original purchaser. This guarantee shall not apply to fuses or any product or parts which have been subject to misuse, neglect, accident or abnormal conditions of operation.
- 5.2 In the event of failure of a product covered by this guarantee, PAG Limited will repair and calibrate equipment returned to an authorised Service Facility within the period of the guarantee, provided the guarantor's examination discloses to its satisfaction the product was defective. The guarantor may, at its option, replace the product in lieu of repair. With regard to any equipment returned within this period, said repairs or replacements will be made without charge. If the failure has been caused by misuse, neglect, accident or abnormal conditions of operation, repairs will be billed at a nominal cost. In such a case, an estimate will be submitted before work is started, if requested.

For more information visit www.paguk.com

Disclaimer

The information contained in this document is correct at the time of publication. PAG Ltd. reserves the right to change specifications or product details without notification. Changes to product details will be incorporated in the next version of the document. PAG updates documents on a regular basis.

Trademarks

All PAG registered trademarks are the property of PAG Ltd. All third party trademarks are acknowledged as such.

Copyright © 2017 PAG Ltd. All rights reserved